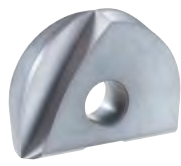




List 78PFB

OSG PHOENIX® PFB INSERTS

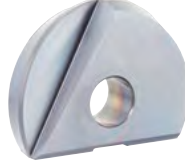
PACKED
1 PIECE



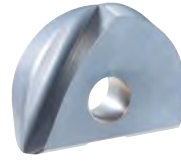
Spiral



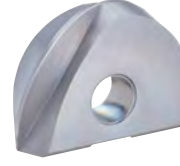
Spiral (Full Radius)



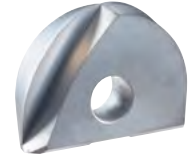
Straight (Full Radius)



Spiral (Strengthened Edge)



Spiral (High Hardness)



Spiral (Diamond Coated)

EDP Number	Designation	Type	Specification	Number of Cutting Edges	Range	Insert Size				Grade
						α (°)	D (Inch)	R (Inch)	T (Inch)	
52101020	● PFB0250A-SP	1	Spiral	2	180	0.250	0.125	2.00	5.18	XP3225
52101021	● PFB0375A-SP	1	Spiral	2	180	0.375	0.188	2.60	8.50	XP3225
52101022	● PFB0500A-SP	1	Spiral	2	180	0.500	0.250	3.00	10.00	XP3225
52101023	● PFB0625A-SP	1	Spiral	2	180	0.625	0.313	4.00	12.00	XP3225
52101024	● PFB0750A-SP	1	Spiral	2	180	0.750	0.375	5.00	15.00	XP3225
52101025	● PFB1000A-SP	1	Spiral	2	180	1.000	0.500	6.00	18.50	XP3225
52101026	● PFB1250A-SP	1	Spiral	2	180	1.250	0.625	7.00	23.50	XP3225
52101010	● PFB0250A-SP	1	Spiral	2	180	0.250	0.125	2.00	5.18	XP3320
52101011	● PFB0375A-SP	1	Spiral	2	180	0.375	0.188	2.60	8.50	XP3320
52101012	● PFB0500A-SP	1	Spiral	2	180	0.500	0.250	3.00	10.00	XP3320
52101013	● PFB0625A-SP	1	Spiral	2	180	0.625	0.313	4.00	12.00	XP3320
52101014	● PFB0750A-SP	1	Spiral	2	180	0.750	0.375	5.00	15.00	XP3320
52101015	● PFB1000A-SP	1	Spiral	2	180	1.000	0.500	6.00	18.50	XP3320
52101016	● PFB1250A-SP	1	Spiral	2	180	1.250	0.625	7.00	23.50	XP3320
52101040	● PFB0250A-Q	2	Spiral (Full Radius)	2	220	0.250	0.125	2.00	5.18	XP3225
52101041	● PFB0375A-Q	2	Spiral (Full Radius)	2	220	0.375	0.188	2.60	8.50	XP3225
52101042	● PFB0500A-Q	2	Spiral (Full Radius)	2	220	0.500	0.250	3.00	10.00	XP3225
52101043	● PFB0625A-Q	3	Spiral (Full Radius)	2	220	0.625	0.313	4.00	12.00	XP3225
52101044	● PFB0750A-Q	3	Spiral (Full Radius)	2	220	0.750	0.375	5.00	15.00	XP3225
52101045	● PFB1000A-Q	3	Spiral (Full Radius)	2	220	1.000	0.500	6.00	18.50	XP3225
52101046	● PFB1250A-Q	3	Spiral (Full Radius)	2	220	1.250	0.625	7.00	23.50	XP3225
52101051	● PFB0375A-Q-ST	2	Straight (Full Radius)	2	200	0.375	0.188	2.60	8.50	XP2225
52101052	● PFB0500A-Q-ST	2	Straight (Full Radius)	2	200	0.500	0.250	3.00	10.00	XP2225
52101053	● PFB0625A-Q-ST	3	Straight (Full Radius)	2	220	0.625	0.313	4.00	12.00	XP2225
52101054	● PFB0750A-Q-ST	3	Straight (Full Radius)	2	220	0.750	0.375	5.00	15.00	XP2225
52101055	● PFB1000A-Q-ST	3	Straight (Full Radius)	2	220	1.000	0.500	6.00	18.50	XP2225
52101056	● PFB1250A-Q-ST	3	Straight (Full Radius)	2	220	1.250	0.625	7.00	23.50	XP2225
52101030	● PFB0250A-SH	2	Spiral (Reinforced Edge)	2	220	0.250	0.125	2.00	5.18	XP3310
52101031	● PFB0375A-SH	1	Spiral (Reinforced Edge)	2	180	0.375	0.188	2.60	8.50	XP3310
52101032	● PFB0500A-SH	1	Spiral (Reinforced Edge)	2	180	0.500	0.250	3.00	10.00	XP3310
52101033	● PFB0625A-SH	1	Spiral (Reinforced Edge)	2	180	0.625	0.313	4.00	12.00	XP3310
52101034	● PFB0750A-SH	1	Spiral (Reinforced Edge)	2	180	0.750	0.375	5.00	15.00	XP3310
52101035	● PFB1000A-SH	1	Spiral (Reinforced Edge)	2	180	1.000	0.500	6.00	18.50	XP3310
52101036	● PFB1250A-SH	1	Spiral (Reinforced Edge)	2	180	1.250	0.625	7.00	23.50	XP3310
52101060	● PFB0375A-HH	1	Spiral (Reinforced Edge)	2	180	0.375	0.188	2.60	8.50	XP6703
52101061	● PFB0500A-HH	1	Spiral (Reinforced Edge)	2	180	0.500	0.250	3.00	10.00	XP6703
52101062	● PFB0625A-HH	1	Spiral (Reinforced Edge)	2	180	0.625	0.313	4.00	12.00	XP6703
52101063	● PFB0750A-HH	1	Spiral (Reinforced Edge)	2	180	0.750	0.375	5.00	15.00	XP6703
52101064	● PFB1000A-HH	1	Spiral (Reinforced Edge)	2	180	1.000	0.500	6.00	18.50	XP6703
52101000	● PFB0250A-D	2	Spiral (Diamond Coated)	2	220	0.250	0.125	2.00	5.18	XC4505
52101001	● PFB0375A-D	1	Spiral (Diamond Coated)	2	180	0.375	0.188	2.60	8.50	XC4505
52101002	● PFB0500A-D	1	Spiral (Diamond Coated)	2	180	0.500	0.250	3.00	10.00	XC4505

● Stocked ○ Available Upon Request; MOQ May Apply ▲ Globally Stocked



ABOUT OSG

DRILLING

THREADING

MILLING

HOLDERS

INDEX





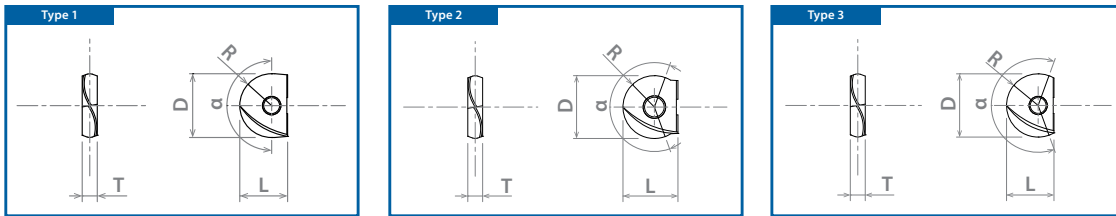
List 78PFB (Continued)

OSG PHOENIX® PFB INSERTS

PACKED
1 PIECE

EDP Number	Designation	Type	Specification	Number of Cutting Edges	Range	Insert Size				Grade
						α (°)	D (Inch)	R (Inch)	T (Inch)	
52101003	● PF80625A-D	1	Spiral (Diamond Coated)	2	180	0.625	0.313	4.00	12.00	XC4505
52101004	● PFB0750A-D	1	Spiral (Diamond Coated)	2	180	0.750	0.375	5.00	15.00	XC4505
52101005	● PFB1000A-D	1	Spiral (Diamond Coated)	2	180	1.000	0.500	6.00	18.50	XC4505
52101006	● PFB1250A-D	1	Spiral (Diamond Coated)	2	180	1.250	0.625	7.00	23.50	XC4505

● Stocked ○ Available Upon Request; MOQ May Apply ▲ Globally Stocked



DESIGNATION EXPLANATION

PFB 0250 A-SP XP3225



See Full Detail on Pages 1522-1523

CONTINUED ▶

Insert Grade	P	M	K	N	S	H
	Steel	Stainless Steel	Cast Iron	Non-Ferrous	HRSA	Hardened Steel
XC4505				○		
XP2225	○	○			○	○
XP3225	○	○		○	○	
XP3310			○			○
XP3320	○	○	○		○	○
XP6703	○		○			○

XP3225 best recommended for aluminum & copper alloy applications.
XC4505 best recommended for graphite & CFRP applications.

○ Good ○ Best

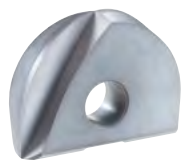




List 78PFB (Continued)

PACKED
1 PIECE

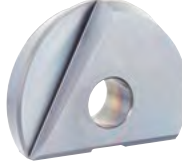
OSG PHOENIX® PFB INSERTS



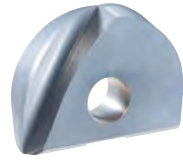
Spiral



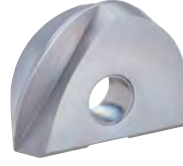
Spiral (Full Radius)



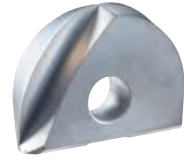
Straight (Full Radius)



Spiral (Strengthened Edge)



Spiral (High Hardness)



Spiral (Diamond Coated)

EDP Number	Designation	Type	Specification	Number of Cutting Edges	Range	Insert Size				Grade
						α (°)	D (mm)	R (mm)	T (mm)	
7820030	PFB080-SP	1	Spiral	2	180	8.00	4.00	2.40	7.00	XP3225
7820031	PFB100-SP	1	Spiral	2	180	10.00	5.00	2.60	8.50	XP3225
7820032	PFB120-SP	1	Spiral	2	180	12.00	6.00	3.00	10.00	XP3225
7820033	PFB160-SP	1	Spiral	2	180	16.00	8.00	4.00	12.00	XP3225
7820034	PFB200-SP	1	Spiral	2	180	20.00	10.00	5.00	15.00	XP3225
7820035	PFB250-SP	1	Spiral	2	180	25.00	12.50	6.00	18.50	XP3225
7820036	PFB300-SP	1	Spiral	2	180	30.00	15.00	7.00	22.50	XP3225
7820010	PFB080-SP	1	Spiral	2	180	8.00	4.00	2.40	7.00	XP3320
7820011	PFB100-SP	1	Spiral	2	180	10.00	5.00	2.60	8.50	XP3320
7820012	PFB120-SP	1	Spiral	2	180	12.00	6.00	3.00	10.00	XP3320
7820013	PFB160-SP	1	Spiral	2	180	16.00	8.00	4.00	12.00	XP3320
7820014	PFB200-SP	1	Spiral	2	180	20.00	10.00	5.00	15.00	XP3320
7820015	PFB250-SP	1	Spiral	2	180	25.00	12.50	6.00	18.50	XP3320
7820016	PFB300-SP	1	Spiral	2	180	30.00	15.00	7.00	22.50	XP3320
7820048	PFB060-Q	2	Spiral (Full Radius)	2	220	6.00	3.00	2.00	5.00	XP3225
7820049	PFB070-Q	2	Spiral (Full Radius)	2	220	7.00	3.50	2.00	5.50	XP3225
7820050	PFB080-Q	2	Spiral (Full Radius)	2	220	8.00	4.00	2.40	7.00	XP3225
7820051	PFB100-Q	2	Spiral (Full Radius)	2	220	10.00	5.00	2.60	8.50	XP3225
7820052	PFB120-Q	2	Spiral (Full Radius)	2	220	12.00	6.00	3.00	10.00	XP3225
7820053	PFB160-Q	3	Spiral (Full Radius)	2	220	16.00	8.00	4.00	12.00	XP3225
7820054	PFB200-Q	3	Spiral (Full Radius)	2	220	20.00	10.00	5.00	15.00	XP3225
7820055	PFB250-Q	3	Spiral (Full Radius)	2	220	25.00	12.50	6.00	18.50	XP3225
7820056	PFB300-Q	3	Spiral (Full Radius)	2	220	30.00	15.00	7.00	22.50	XP3225
7820060	PFB080-Q-ST	2	Straight (Full Radius)	2	200	8.00	4.00	2.40	7.00	XP2225
7820061	PFB100-Q-ST	2	Straight (Full Radius)	2	200	10.00	5.00	2.60	8.50	XP2225
7820062	PFB120-Q-ST	2	Straight (Full Radius)	2	200	12.00	6.00	3.00	10.00	XP2225
7820063	PFB160-Q-ST	3	Straight (Full Radius)	2	220	16.00	8.00	4.00	12.00	XP2225
7820064	PFB200-Q-ST	3	Straight (Full Radius)	2	220	20.00	10.00	5.00	15.00	XP2225
7820065	PFB250-Q-ST	3	Straight (Full Radius)	2	220	25.00	12.50	6.00	18.50	XP2225
7820066	PFB300-Q-ST	3	Straight (Full Radius)	2	220	30.00	15.00	7.00	22.50	XP2225
7820039	PFB060-SH	2	Spiral (Reinforced Edge)	2	220	6.00	3.00	2.00	5.00	XP3310
7820040	PFB080-SH	1	Spiral (Reinforced Edge)	2	180	8.00	4.00	2.40	7.00	XP3310
7820041	PFB100-SH	1	Spiral (Reinforced Edge)	2	180	10.00	5.00	2.60	8.50	XP3310
7820042	PFB120-SH	1	Spiral (Reinforced Edge)	2	180	12.00	6.00	3.00	10.00	XP3310
7820043	PFB160-SH	1	Spiral (Reinforced Edge)	2	180	16.00	8.00	4.00	12.00	XP3310
7820044	PFB200-SH	1	Spiral (Reinforced Edge)	2	180	20.00	10.00	5.00	15.00	XP3310
7820045	PFB250-SH	1	Spiral (Reinforced Edge)	2	180	25.00	12.50	6.00	18.50	XP3310
7820046	PFB300-SH	1	Spiral (Reinforced Edge)	2	180	30.00	15.00	7.00	22.50	XP3310
7820047	PFB320-SH	1	Spiral (Reinforced Edge)	2	180	32.00	16.00	7.00	23.50	XP3310
7820107	PFB100-HH	1	Spiral (Reinforced Edge)	2	180	10.00	5.00	2.60	8.50	XP6703
7820108	PFB120-HH	1	Spiral (Reinforced Edge)	2	180	12.00	6.00	3.00	10.00	XP6703
7820109	PFB160-HH	1	Spiral (Reinforced Edge)	2	180	16.00	8.00	4.00	12.00	XP6703
7820110	PFB200-HH	1	Spiral (Reinforced Edge)	2	180	20.00	10.00	5.00	15.00	XP6703
7820111	PFB250-HH	1	Spiral (Reinforced Edge)	2	180	25.00	12.50	6.00	18.50	XP6703
7820112	PFB300-HH	1	Spiral (Reinforced Edge)	2	180	30.00	15.00	7.00	22.50	XP6703
7820113	PFB320-HH	1	Spiral (Reinforced Edge)	2	180	32	16	7	23.5	XP6703
7820018	PFB060-D	2	Spiral (Diamond Coated)	2	220	6.00	3.00	2.00	5.00	XC4505
7820019	PFB070-D	2	Spiral (Diamond Coated)	2	220	7.00	3.50	2.00	5.50	XC4505
7820020	PFB080-D	1	Spiral (Diamond Coated)	2	180	8.00	4.00	2.40	7.00	XC4505
7820021	PFB100-D	1	Spiral (Diamond Coated)	2	180	10.00	5.00	2.60	8.50	XC4505
7820022	PFB120-D	1	Spiral (Diamond Coated)	2	180	12.00	6.00	3.00	10.00	XC4505
7820023	PFB160-D	1	Spiral (Diamond Coated)	2	180	16.00	8.00	4.00	12.00	XC4505
7820024	PFB200-D	1	Spiral (Diamond Coated)	2	180	20.00	10.00	5.00	15.00	XC4505

● Stocked ○ Available Upon Request; MOQ May Apply ▲ Globally Stocked



ABOUT OSG

DRILLING

THREADING

MILLING

HOLDERS

INDEX





List 78PFB (Continued)

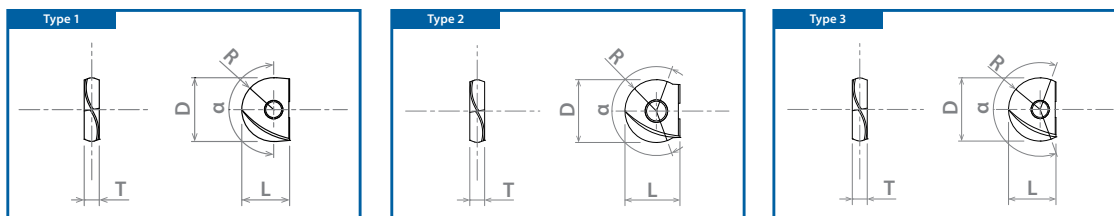
OSG PHOENIX® PFB INSERTS

PACKED
1 PIECE

EDP Number	Designation	Type	Specification	Number of Cutting Edges	Range	Insert Size				Grade
						α (°)	D (mm)	R (mm)	T (mm)	
7820025	● PFB250-D	1	Spiral (Diamond Coated)	2	180	25.00	12.50	6.00	18.50	XC4505
7820026	● PFB300-D	1	Spiral (Diamond Coated)	2	180	30.00	15.00	7.00	22.50	XC4505

● Stocked ○ Available Upon Request; MOQ May Apply ▲ Globally Stocked

PXI



DESIGNATION EXPLANATION

PFB 0250 A-SP XP3225



See Full Detail on Pages 1522-1523

CONTINUED

Insert Grade	P	M	K	N	S	H
	Steel	Stainless Steel	Cast Iron	Non-Ferrous	HRSA	Hardened Steel
XC4505				○		
XP2225	○	○			○	○
XP3225	○	○		○	○	
XP3310			○			○
XP3320	○	○	○		○	○
XP6703	○		○			○

XP3225 best recommended for aluminum & copper alloy applications.
XC4505 best recommended for graphite & CFRP applications.

○ Good ○ Best





PACKED
1 PIECE

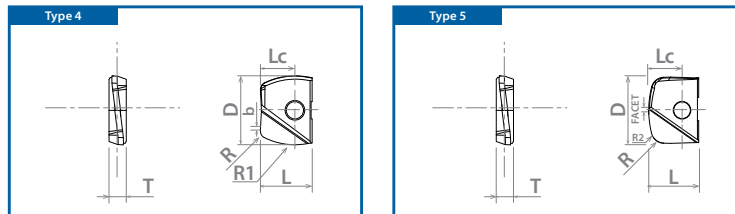
List 78PFB (Continued)

OSG PHOENIX[®] PFB INSERTSBarrel Type
Type 4Lens Type
Type 5

EDP Number	Designation	Type	Specification	Number of Cutting Edges	Insert Size								Grade	
					D (mm)	R (mm)	R1 (mm)	R2 (mm)	T (mm)	b (mm)	Facet (mm)	Lc (mm)		L (Inch)
7820071	PFB100R150-BR-ST	4	Multi-Purpose	2	10.00	1.00	15.00	-	2.60	0.30	-	5.00	8.50	XP3225
7820072	PFB120R180-BR-ST	4	Multi-Purpose	2	12.00	1.00	18.00	-	3.00	0.30	-	6.00	10.00	XP3225
7820073	PFB160R240-BR-ST	4	Multi-Purpose	2	16.00	2.00	24.00	-	4.00	0.50	-	8.00	12.00	XP3225
7820074	PFB200R300-BR-ST	4	Multi-Purpose	2	20.00	2.00	30.00	-	5.00	0.50	-	10.00	15.00	XP3225
7820075	PFB250R375-BR-ST	4	Multi-Purpose	2	25.00	2.50	37.50	-	6.00	0.50	-	12.50	18.50	XP3225
7820076	PFB320R480-BR-ST	4	Multi-Purpose	2	32.00	3.00	48.00	-	7.00	0.50	-	16.00	23.50	XP3225
7820081	PFB100R150-BR-SH	4	Reinforced Edge	2	10.00	1.00	15.00	-	2.60	0.30	-	5.00	8.50	XP3310
7820082	PFB120R180-BR-SH	4	Reinforced Edge	2	12.00	1.00	18.00	-	3.00	0.30	-	6.00	10.00	XP3310
7820083	PFB160R240-BR-SH	4	Reinforced Edge	2	16.00	2.00	24.00	-	4.00	0.50	-	8.00	12.00	XP3310
7820084	PFB200R300-BR-SH	4	Reinforced Edge	2	20.00	2.00	30.00	-	5.00	0.50	-	10.00	15.00	XP3310
7820085	PFB250R375-BR-SH	4	Reinforced Edge	2	25.00	2.50	37.50	-	6.00	0.50	-	12.50	18.50	XP3310
7820086	PFB320R480-BR-SH	4	Reinforced Edge	2	32.00	3.00	48.00	-	7.00	0.50	-	16.00	23.50	XP3310
7820091	PFB100R150-LZ-ST	5	Multi-Purpose	2	10.00	1.00	-	15.00	2.60	-	0.75	3.30	8.50	XP3225
7820092	PFB120R180-LZ-ST	5	Multi-Purpose	2	12.00	1.00	-	18.00	3.00	-	0.75	4.00	10.00	XP3225
7820093	PFB160R240-LZ-ST	5	Multi-Purpose	2	16.00	2.00	-	24.00	4.00	-	1.00	5.30	12.00	XP3225
7820094	PFB200R300-LZ-ST	5	Multi-Purpose	2	20.00	2.00	-	30.00	5.00	-	1.75	6.70	15.00	XP3225
7820095	PFB250R375-LZ-ST	5	Multi-Purpose	2	25.00	2.50	-	37.50	6.00	-	1.75	8.30	18.50	XP3225
7820096	PFB320R480-LZ-ST	5	Multi-Purpose	2	32.00	3.00	-	48.00	7.00	-	2.00	10.70	23.50	XP3225
7820101	PFB100R150-LZ-SH	5	Reinforced Edge	2	10.00	1.00	-	15.00	2.60	-	0.75	3.30	8.50	XP3310
7820102	PFB120R180-LZ-SH	5	Reinforced Edge	2	12.00	1.00	-	18.00	3.00	-	0.75	4.00	10.00	XP3310
7820103	PFB160R240-LZ-SH	5	Reinforced Edge	2	16.00	2.00	-	24.00	4.00	-	1.00	5.30	12.00	XP3310
7820104	PFB200R300-LZ-SH	5	Reinforced Edge	2	20.00	2.00	-	30.00	5.00	-	1.75	6.70	15.00	XP3310
7820105	PFB250R375-LZ-SH	5	Reinforced Edge	2	25.00	2.50	-	37.50	6.00	-	1.75	8.30	18.50	XP3310
7820106	PFB320R480-LZ-SH	5	Reinforced Edge	2	32.00	3.00	-	48.00	7.00	-	2.00	10.70	23.50	XP3310

● Stocked ○ Available Upon Request; MOQ May Apply ▲ Globally Stocked

PXI



DESIGNATION EXPLANATION

PFB 100 R150-BR-ST XP3225

● Series ● Diameter ● Edge Radius ● Type ● Specification ● Grade

See Full Detail on Pages 1522-1523

Insert Grade	P	M	K	N	S	H
	Steel	Stainless Steel	Cast Iron	Non-Ferrous	HRSA	Hardened Steel
XC4505				○		
XP2225	○	○			○	○
XP3225	○	○		○	○	
XP3310			○			○
XP3320	○	○	○		○	○
XP6703	○		○			○

XP3225 best recommended for aluminum & copper alloy applications.
XC4505 best recommended for graphite & CFRP applications.

○ Good ○ Best

